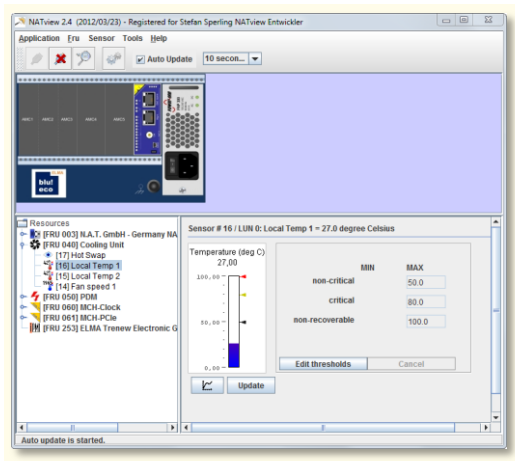


NATview 2.13

1. Overview and purpose.

NATview is an easy to use visualization tool for any MicroTCA system that includes a NAT-MCH. NATview allows the user to view and manipulate the components of the MicroTCA system in a graphical way.



2. Platform independence.

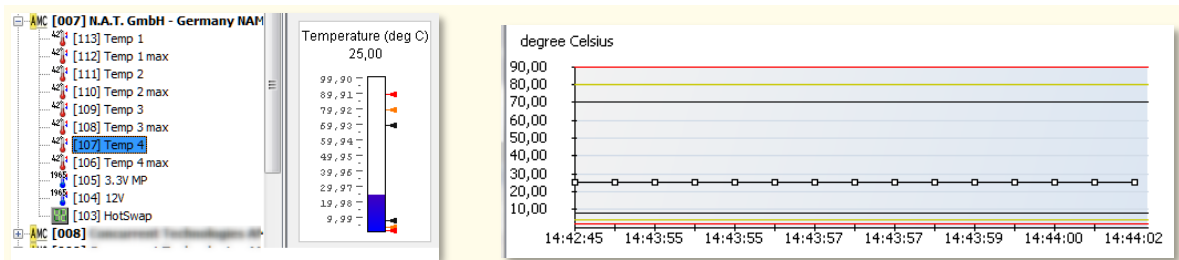
NATview runs on every platform that can execute Oracle Java 1.7. It has been successfully tested on Windows (XP to 8), Linux (Ubuntu, SuSE) and MacOS X (Leopard to Mavericks).

3. No installation required - even runs from a memory stick.

4. Comprehensive graphical overview of the system state.

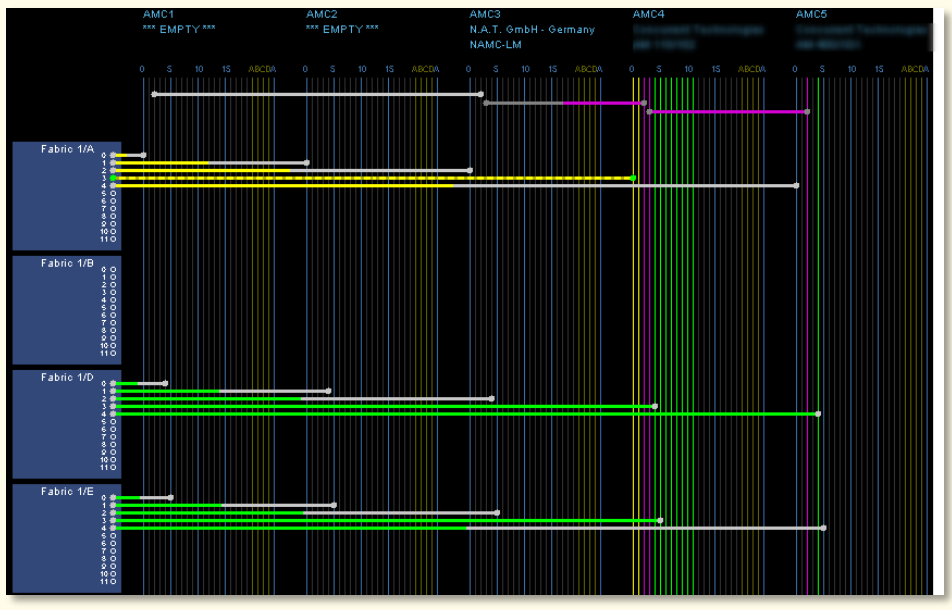
5. Read current sensor values.

Check the current sensor states and values. Even monitor values over time.



6. Backplane Connectivity Viewer

Comprehensive display of the backplane connections. Understand why the system does not boot or why the PCIe does not work.



7. FRU Editor

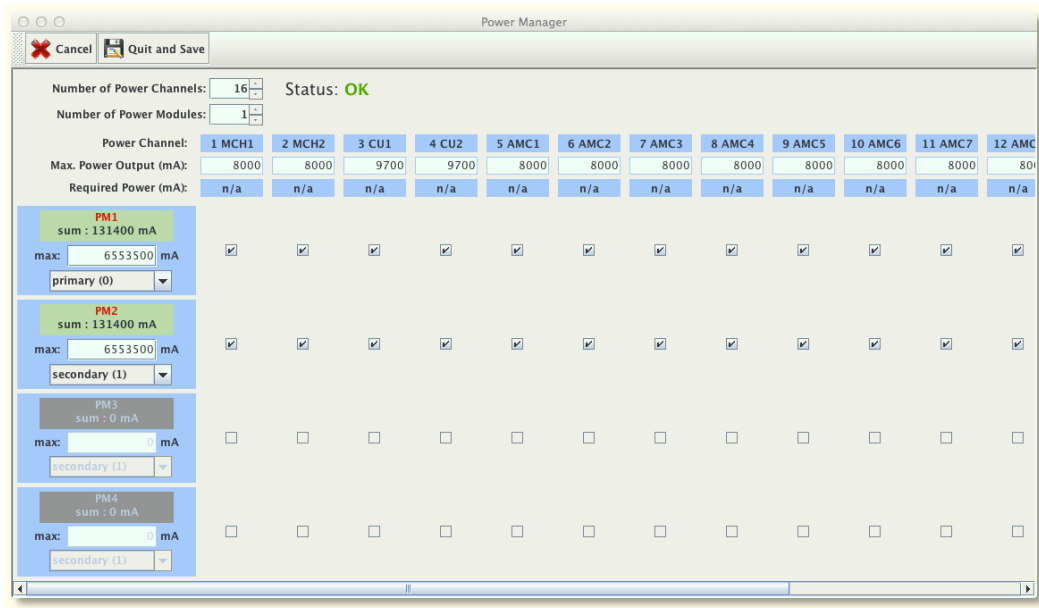
Check and modify the FRU info data of every FRU device in the system (if you have the license to do so).

The screenshot shows the FRU Editor application window titled "Fru Editor: FRU #253". The window has a menu bar with "Close window", "Read from file...", "Write to file...", "Write to FRU device...", and "PowerManager...". The main area is divided into two panes. The left pane shows a tree view of the FRU Information Tree, with "Product Info Area" selected. The right pane shows a table of fields and values.

Field	Value	CodeType
Product Info Area Format Ver...	0x1	Decimal Integer
Product Info Area Length	80	Decimal Integer
Language Code	25 - English	Multiple Choice
Manufacturer Name	N.A.T. GmbH	String
Product Name	NATIVE-C2 - Backplane	String
Product Part Model Number	090611	String
Product Version	Rel.: 090529	String
Product Serial Number	090611-0164	String
Asset Tag		String
Fru File ID		String
Product Info Area Checksum ...	0x1e	Decimal Integer

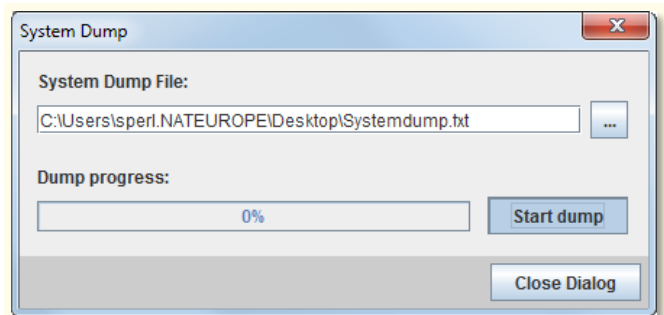
8. Power Manager

Easily change the power configuration – load sharing or redundancy – in no time with just a few mouse clicks!



9. System Dump

When in trouble give your supporter the information they need – easy as 1-2-3:



10. HPM Update

Update the system firmware with a few mouse-clicks. No cryptic command lines!

