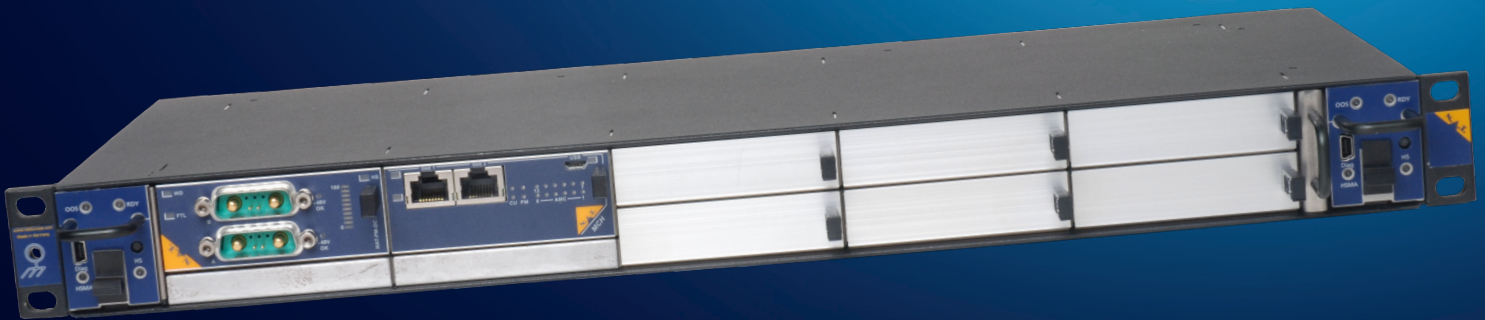




NATIVE-C1

1U 19" rack-mounted MTCA Chassis



Overview

The NATIVE-C1 offers the performance benefit of MicroTCA in a space-saving horizontal-mounted 1U height. Six AdvancedMC (AMC) slots offer users the flexibility to configure for a wide range of applications, enterprise, industrial control, telecom, wireless, and others. Its unique card guide design eases the insertion/removal of AMC cards. The replaceable backplane improves the serviceability of the system. NATIVE-C1 equips with higher performance cooling unit – over 100 CFM of airflow through the chassis – for better thermal profile.

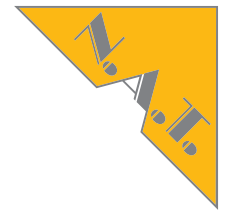
Key features

- Horizontal-mounted six slots 1U 19" rack-mounted enclosure
- 390W or 780W DC managed power supply
- Supporting full-, mid-, or compact-size AMCs
- Up to two redundant hot swappable managed cooling units
- Removable air filters

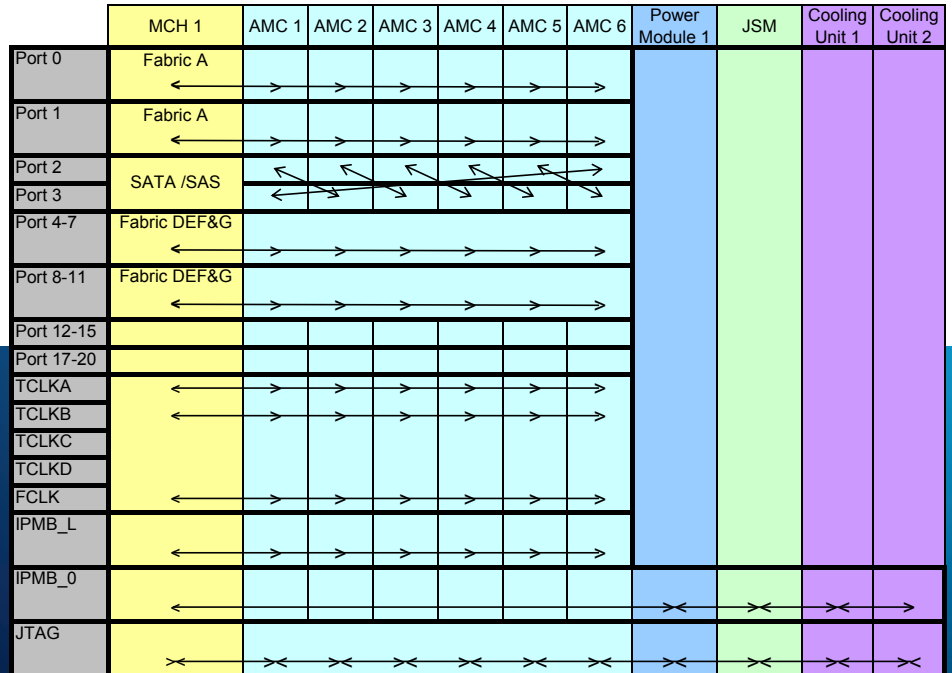


Technical Data

NATIVE-C1



NATIVE-C1 Backplane Topology



Overview

The NATIVE-C1 offers the performance benefit of MicroTCA in a space-saving horizontal-mounted 1U height. Six AdvancedMC (AMC) slots offer users the flexibility to configure for a wide range of applications, enterprise, industrial control, telecom, wireless, and others. Its unique card guide design eases the insertion/removal of AMC cards. The replaceable backplane improves the serviceability of the system. NATIVE-C1 equips with higher performance cooling unit – over 100 CFM of airflow through the chassis – for better thermal profile.

Sample Configuration



Key Features

Chassis Dimensions

- 1U 19-inch EIA rack mount
- Up to 6 AMC slots
- 1 MCH slot
- 1 Power module (PM) slot
- 1 2HP JTAG switch module (JSM) slot
- Up to 2 hot swappable cooling units (CU)
- Maximum 80W per AMC slot
- Maximum 80W per MCH slot
- Removable air filter
- Patented card rail design for ease of insertion/removal AMC cards

Power Module

- NAT-PM-DC780 or any MTCA compliant power module

Backplane

- 1 GbE routed to AMC Port 0
- Point-t-point SATA/SAS Port 2 & 3
- Fabrics D, E, F, G Port 4-7
- TCLKA, TCLKB, and FCLKA to each AMC
- JTAG Connector
- FRU ROM
- IPMI
- Replaceable backplane

Cooling Units

- 4 push-pull fans per CU with each fan rated at 20 CFM
- Individual-controlled fan speed
- Straight through side-to-side cooling
- Fully managed, redundant, and hot swappable

- 2 CUs with 4 fans each operating in push-pull mode
- Monitored fan power for early failure detection
- Air filter removed detection

Environmental/Regulatory/Compliance

- Standard operating temperature: +5 C to +40 C
- Storage temperature: -45 C to 85 C
- Shock and vibration: Level DL1, IEC 61587-1
- FCC Part 15, Class A
- EN 55022, EN 55024
- EIA Compliant
- RoHS Compliant
- PICMG MicroTCA.0 R1.0