

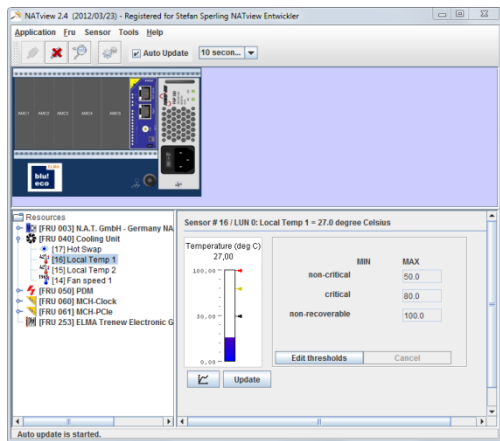


NATview 3

Visualization and Management tool for MicroTCA

1. Overview and purpose.

NATview is an easy to use visualization tool for any MicroTCA system that includes a NAT-MCH. NATview allows the user to view at and manipulate the components of the MicroTCA system in a graphical way.



2. Platform independence.

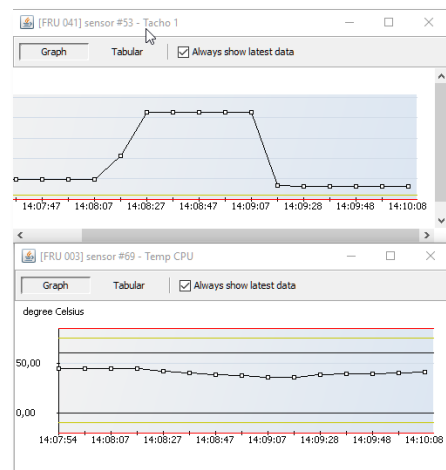
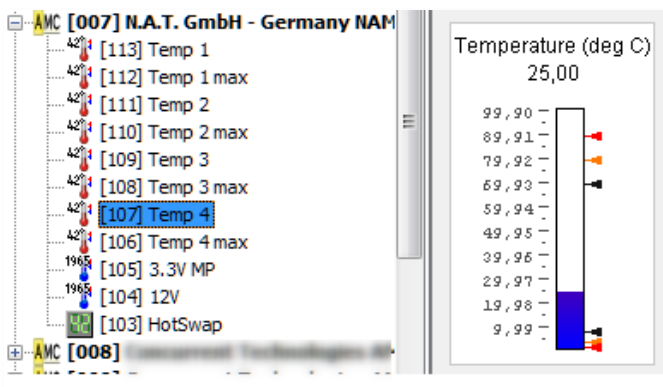
NATview runs on every platform that can execute Oracle Java 1.7. It has been successfully tested on Windows (XP to 10), Linux (Ubuntu, SuSE) and MacOS X (Leopard to High Sierra).

3. No installation required - even runs from a memory stick.

4. Comprehensive graphical overview of the system state.

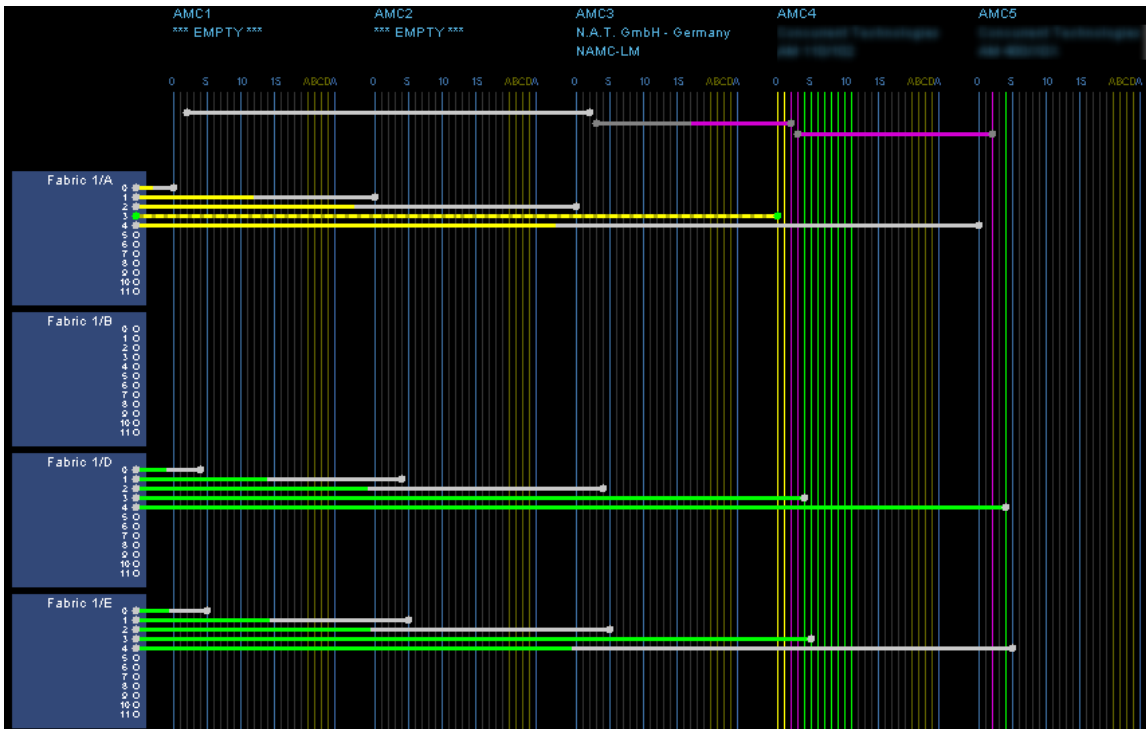
5. Read current sensor values.

Check the current sensor states and values. Even monitor values over time. Monitor multiple sensors at the same time!



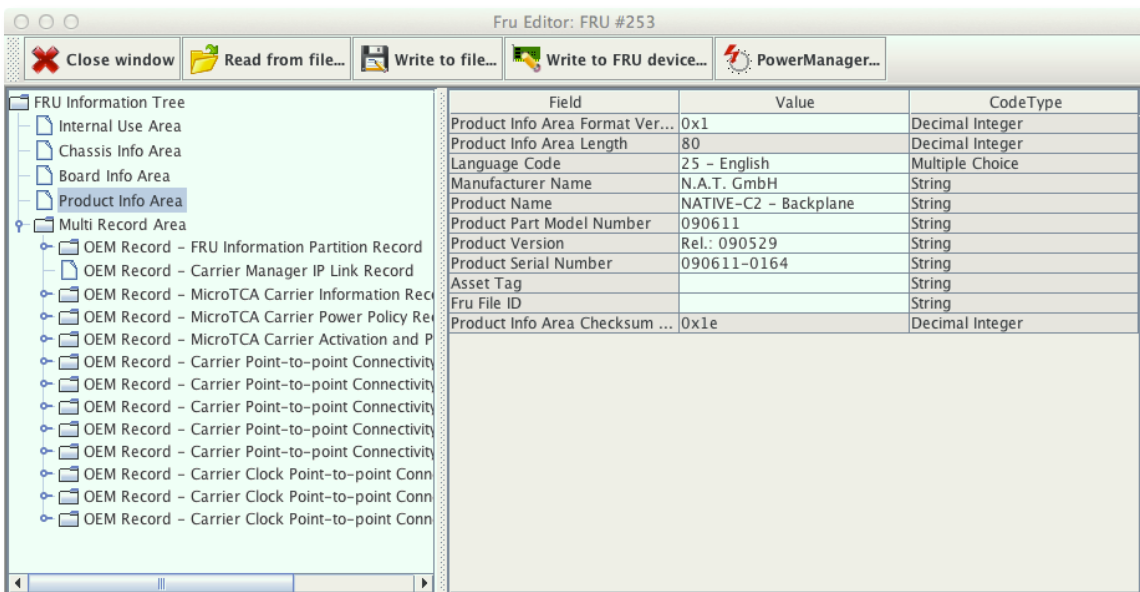
6. Backplane Connectivity Viewer

Comprehensive display of the backplane connections. Understand why the system does not boot or why the PCIe does not work.



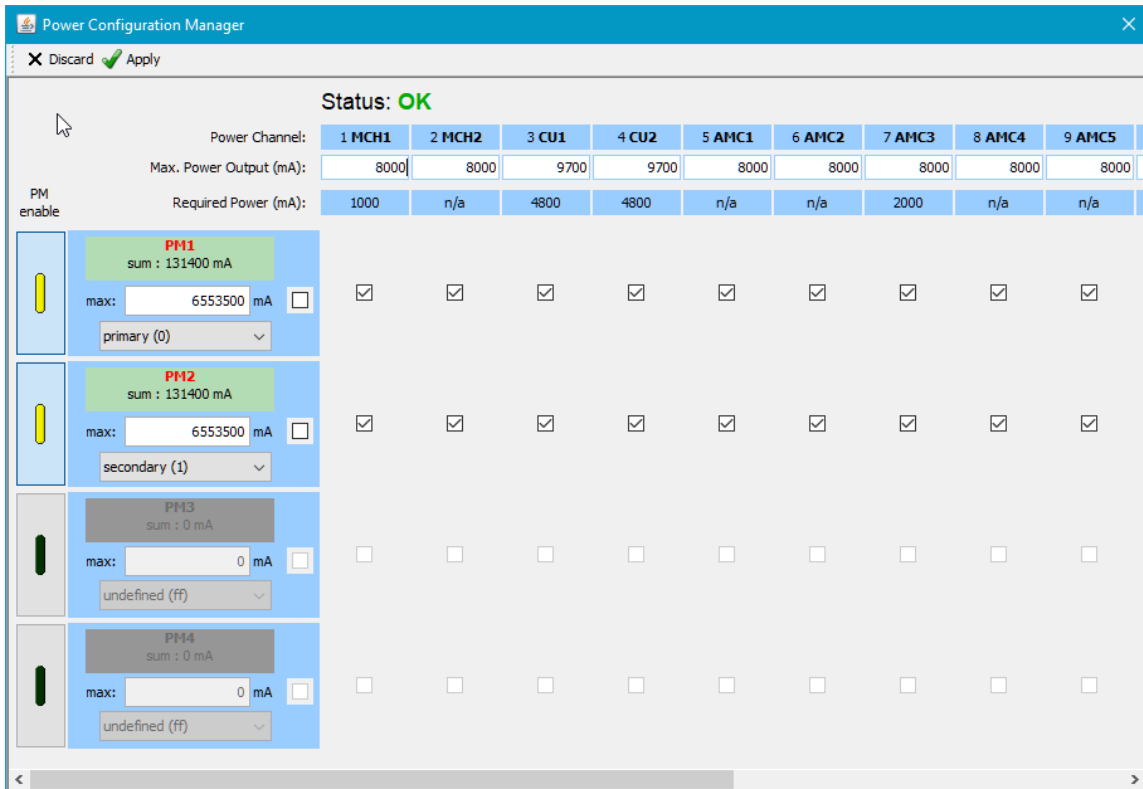
7. FRU Editor

Check and modify the FRU info data of every FRU device in the system (if you have the license to do so).



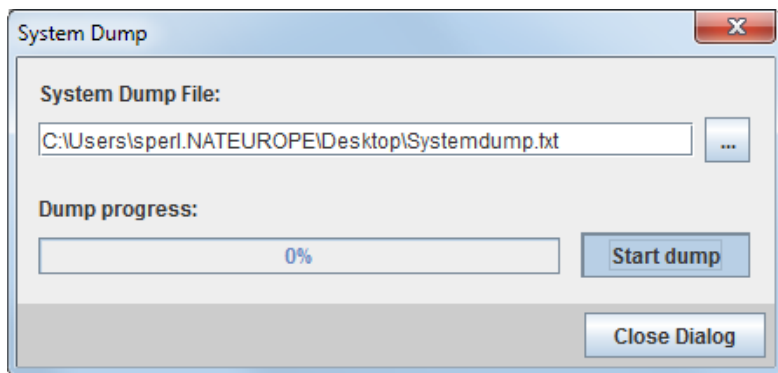
8. NEW Power Manager (reworked)

Easily change the power configuration – load sharing or redundancy – in no time with just a few mouse clicks. Switch all power channels for one power unit on or off with a single mouse click!



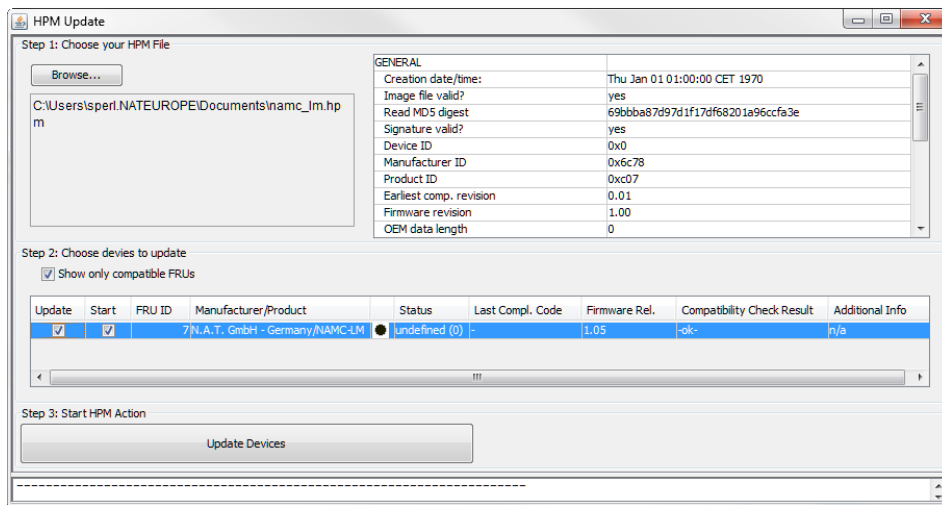
9. System Dump

When in trouble give your supporter the information they need – easy as 1-2-3:



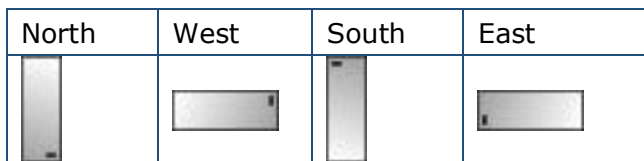
10. HPM Update

Update the system firmware with a few mouse-clicks. No cryptic command lines!



11. **NEW** Support for Non-Standard Systems

Displays the AMCs correctly even for non-standard orientations:



12. **NEW** Checks for updates of the application on startup

Never miss a new NATview release again.

NATview will only inform about a new release – download and installation is up to you so you are always in control!

13. Extendend help viewer

Quick help information is only one mouse click away.

