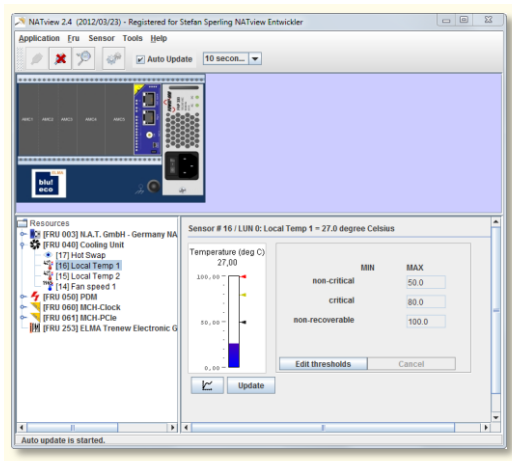


NATview 2.13

1. Overview and purpose.

NATview is an easy to use visualization tool for any MicroTCA system that includes a NAT-MCH. NATview allows the user to view and manipulate the components of the MicroTCA system in a graphical way.



2. Platform independence.

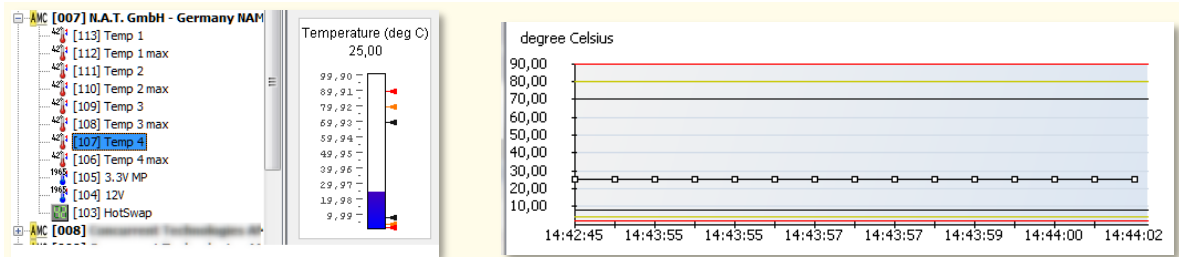
NATview runs on every platform that can execute Oracle Java 1.7. It has been successfully tested on Windows (XP to 8), Linux (Ubuntu, SuSE) and MacOS X (Leopard to Mavericks).

3. No installation required - even runs from a memory stick.

4. Comprehensive graphical overview of the system state.

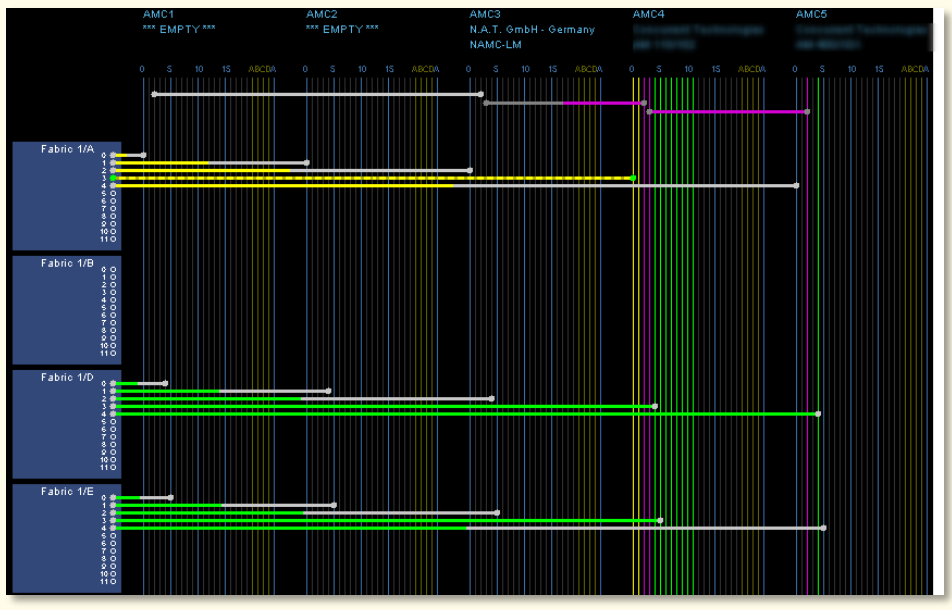
5. Read current sensor values.

Check the current sensor states and values. Even monitor values over time.



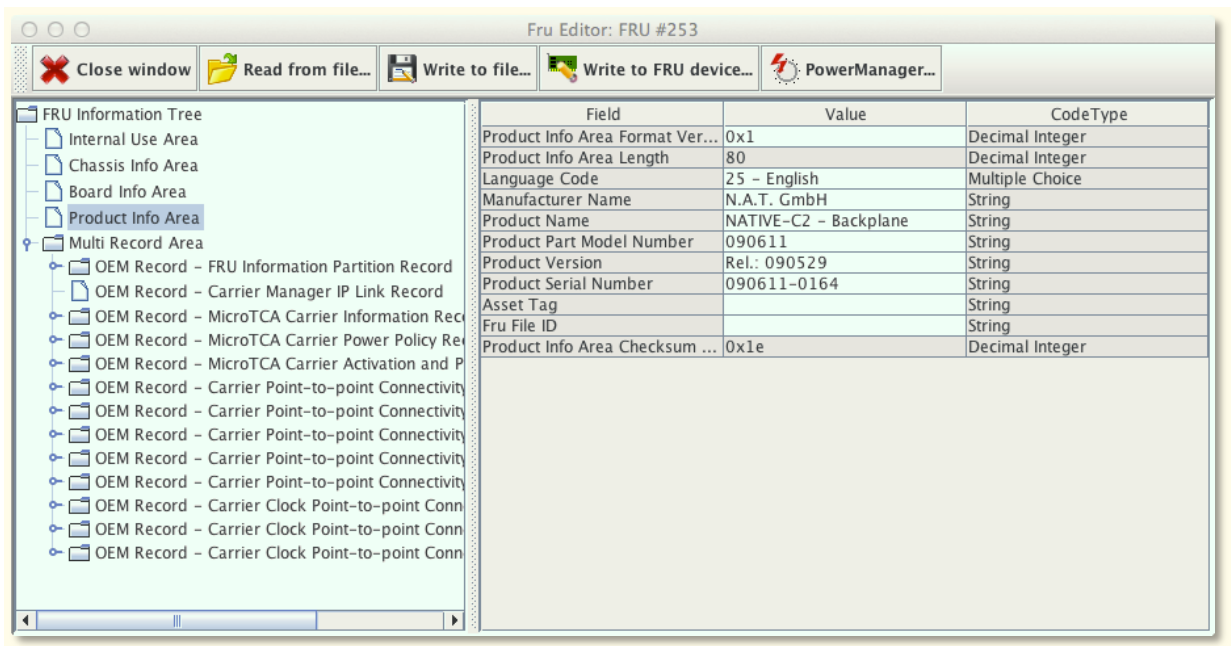
6. Backplane Connectivity Viewer

Comprehensive display of the backplane connections. Understand why the system does not boot or why the PCIe does not work.



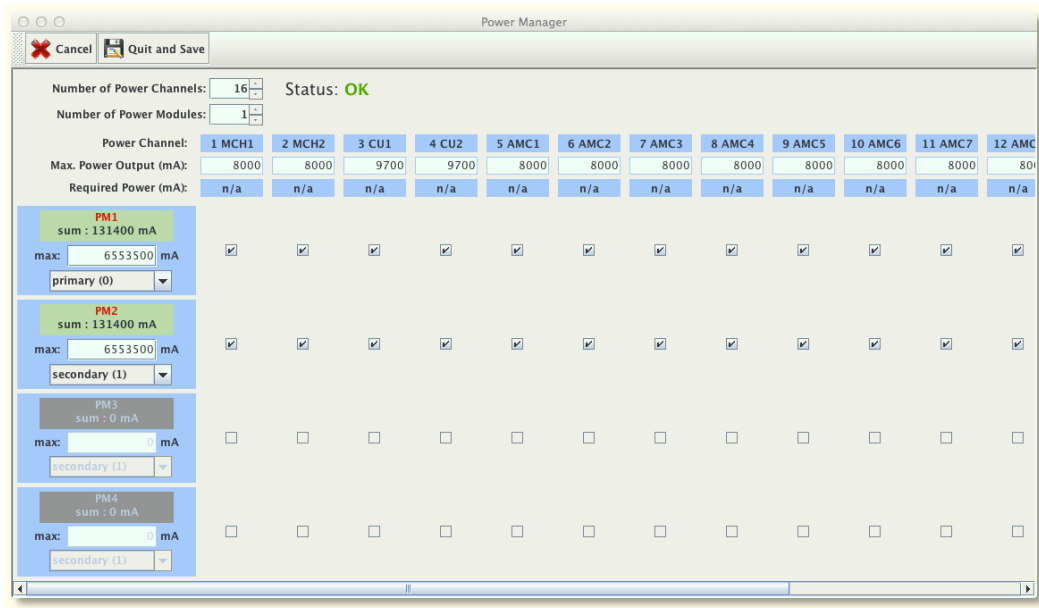
7. FRU Editor

Check and modify the FRU info data of every FRU device in the system (if you have the license to do so).



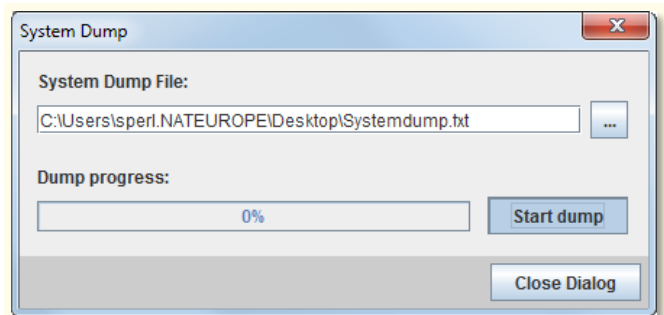
8. Power Manager

Easily change the power configuration – load sharing or redundancy – in no time with just a few mouse clicks!



9. System Dump

When in trouble give your supporter the information they need – easy as 1-2-3:



10. HPM Update

Update the system firmware with a few mouse-clicks. No cryptic command lines!

